

# MODENA

Categoria: **Superior**<sup>2</sup>

Materiale: **Tessuto**

Idrorepellente



NO

Antimacchia



NO

Composizione: 86% Poliestere 11% Nylon 3% Spandex

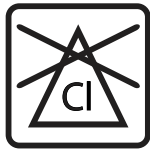
Grammatura: **340g**

Lavaggio



Lavaggio  
a mano

Candeggio



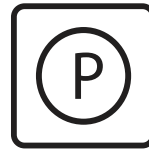
Non  
candeggiare

Stiratura



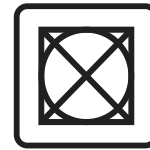
A bassa  
temperatura

Pulitura  
a secco

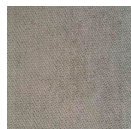


Tutti meno  
tricloroetilene

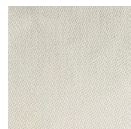
Asciugatura



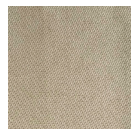
Non adatto  
all'asciugatrice



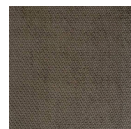
COL. 87



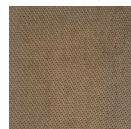
COL. 1602



COL. 1608



COL. 1615



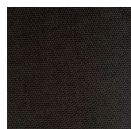
COL. 1617



COL. 1683



COL. 1692



COL. 1696

**semeraro**